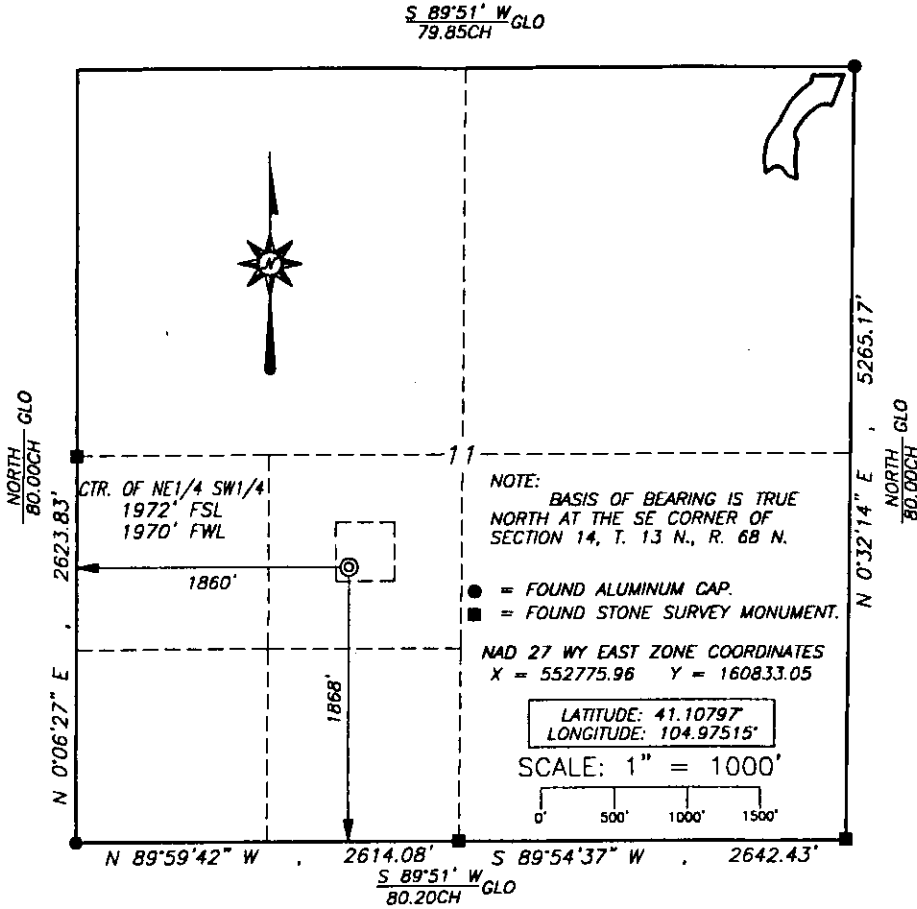


State of Wyoming Corner Record

(In compliance with the *CORNER PERPETUATION AND FILING ACT*, Wyoming Statutes, 1977, Section 36-11-101, et. seq., and the Rules and Regulations of the Board of Registration for Professional Engineers and Professional Land Surveyors)

Reverse side of this form may be used if more space is needed.

Record of original survey and citation of source of historical information (if corner is lost or obliterated). Description of corner monumentation evidence found and/or monument and accessories established to perpetuate the location of this corner. Sketch of relative location of monument, accessories, and reference points with course and distance to adjacent corner(s) (if determined in this survey). Method and rationale for reestablishment of lost or obliterated corner.



FOUND: ALUMINUM CAP LS5297 FLUSH WITH GROUND AT FENCE CORNER.

SET: NOTHING.



RECORDED 5/05/2003 AT 4:31 PM REC# 351318 BK# 1723 PG# 734
DEBRA K. LATHROP, CLERK OF LARAMIE COUNTY, WY PAGE 1 OF 1

Date of Field Work: OCT. 22, 2002 Office Reference: JOB # 93-02

CROSS INDEX DIAGRAM

1 2 3 4 5 6 7 8 9 10 11 12 13 14 15 16 17 18 19 20 21 22 23 24 25																										
A																										A
B																										B
C		6																								C
D			5																							D
E				4																						E
F					3																					F
G						2																				G
H							1																			H
I																										I
J																										J
K																										K
L																										L
M																										M
N																										N
O																										O
P																										P
Q																										Q
R																										R
S																										S
T																										T
U																										U
V																										V
W																										W
X																										X
Y																										Y
Z																										Z
2 3 4 5 6 7 8 9 10 11 12 13 14 15 16 17 18 19 20 21 22 23 24 25																										

Firm/Agency, Address

This corner record was prepared by me or under my direction and supervision.
SEAL & SIGNATURE

SIEK SURVEYING SERVICE

P.O. Box 1765

CASPER

WY 82602

Telephone Number: (307)266-6829



Corner Name: NE Section: 11 T 13 R 68 : 6th P.M. Cross-Index No.: E-21

SBRPEPLS/PLSW: March 1994

LARAMIE COUNTY, WY